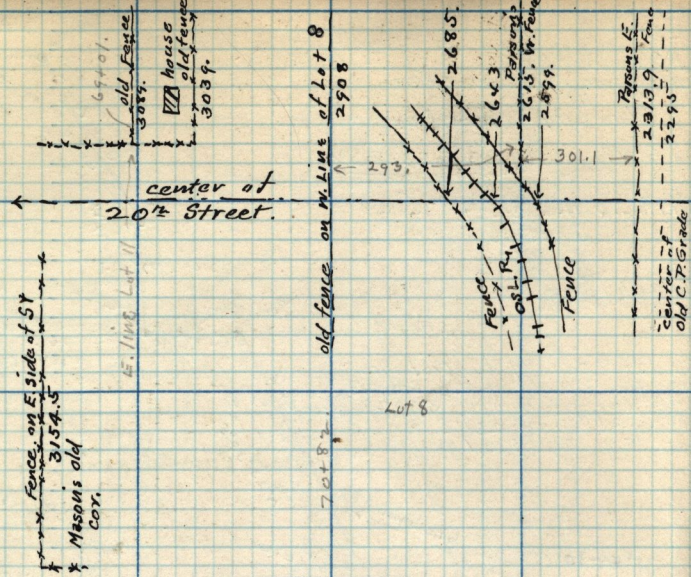


From page 103
 Continuation of the
 Survey of 20th Str.
 Dec. 4, '02
 See Field Book H. p. 12
 " " " J. p. 120



Dec. 8-9-10-11-1902.

Survey for the Royal Oil and Mineral Co. at Promontory in Tp. 8. N-R. 7. W. S.L.M.

From 1/4 Sec. cor. bet Secs 4 & 9, Tp. 8. which is a stone firmly set.

West bet Secs 4 & 9, ascending ridge (rocky)
 2700. find original cor. Secs 4-5-8-9, a stone firmly set but marked with 4 notches on S & 4 notches E, on top of ridge.

Thence & then North bet Secs 4-5, descending ridge
 2620 find original 1/4 Sec. stone firmly set.

5246 " C. Cor. on Tp. line bet cor. of Secs 4-5
 a stone firmly set & marked 4 notches E & 2 notches W.
 from which Rosel tank bears N4°16'E - 50 ft. N. of
 spring bears N48°25'E - mount on top of sharp break
 bears N45°49'E.

From C. C. and Secs 4-5, Thence & then W. using the above
 bearing objects, on random line N. body Tp.

1000. Find original Standard Cor. of Secs 32 & 33 & 1/4 S a stone
 firmly set & marked S. C. & notches E, & 2 notches W
 115°1' N.E. N.W. & S.

2000 Tent bears N161°28'E - Rosel tank N16°42'E - Mount of Stone
 N18°49'E.

3849 find 50' 1/4 Cor. & 13 ft. S. a stone.

4390 top of hill bet bears N169°22'E - Mount of Stone N127°23'E
 Rosel tank N179°25'E.

4800 beg. to descend, over lava

5386 find original cor. Secs 5-6. 57 ft. N. marked
 15 notches E & 1 notch W. W. edge of lower ridge.

Continued on page 105